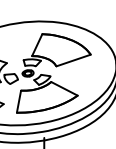
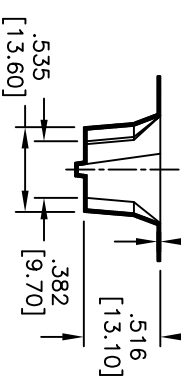
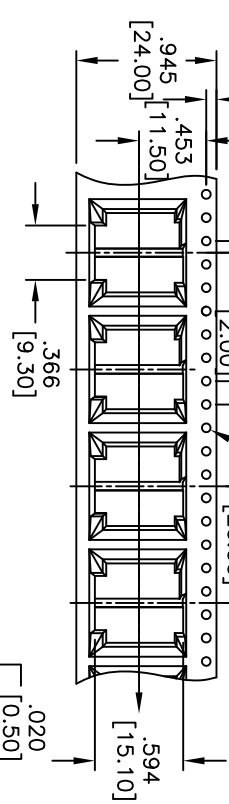
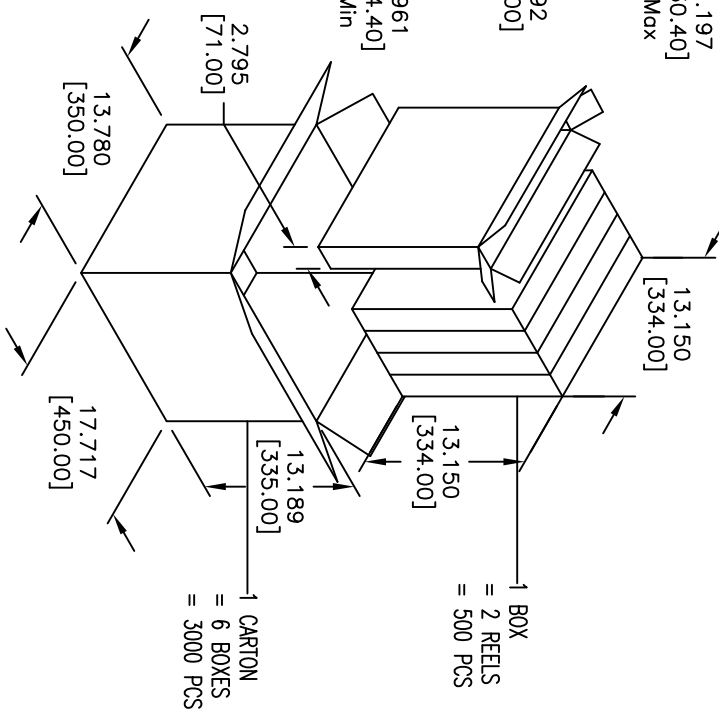
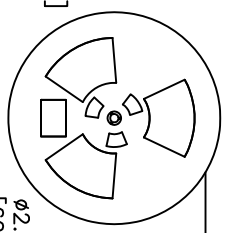
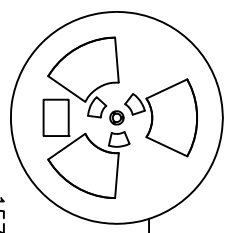
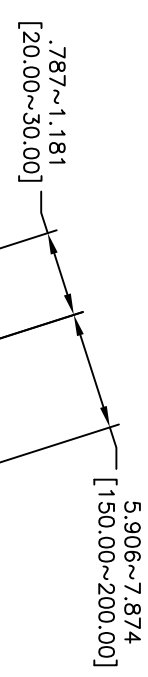


Rev	AWO #	Description	Date	Appr
		SEE SHT 1 OF 2 FOR REVISION		

APPROVED: _____

DATE: _____ TITLE: _____



1 REEL
= 250 PCS

1 BOX
= 2 REELS
= 500 PCS

1 CARTON
= 6 BOXES
= 3000 PCS

REMARK:

- 1.The connector can not be loaded on the position of length 240~360mm in the reel tape and lead tape.The cover tape with 20~30mm length shall not be adhesive on the lead tape and the cover tape is lead portion shall have 150~200mm length (Refer FIG 1).
- 2.Tape shall turn on right direction.
- 3.The direction of terminal,please refer outlining drawing (Refer FIG 2).
- 4.After winding using the adhesive tape(30~50mm) to stick the leader of cover tape on the side of reel.
- 5.One reel can be loaded 250 pcs connector.
- 6.The label shall be posted on the front side of reel (Refer FIG 3).
- 7.Condition of 300mm per minute ,the extraction strength of cover tape shall reach 20~150 gf.
- 8.If the quantity is less than 6 reel in one carton,the packing shall be able to resist to shark.

ADAM TECH
909 Railway Avenue, Union, NJ 07083
Phone: 908-687-5000 Fax: 908-687-5710

TITLE: DC POWER JACK, 2.00mm, 2.50mm, 2.35mm CENTER PIN

UNLESS OTHERWISE SPECIFIED ALL DIMENSIONS ARE INCHES [MM]	
TOLERANCES: EXCEPT AS NOTED	
INCHES	HOLDS
.X ± .10	ØX ± .10
.XX ± .020	ØXX ± .015
.XXX ± .015	ØXXX ± .010
APPROVALS	DATE
DRAWN	DY
CHECKED	
APPROVED	

SIZE	PART NO.	REV.
X	ADC-028-X-TIR	A
REF: S0002C	SCALE: NTS	SHEET 2 OF 2